



**COMMUNITIES
HEALTH AFRICA
TRUST**



**ANNUAL
REPORT**
.....
2023



Problem Statement

A lack of access to family planning information and services contributes to poverty, suffering, and environmental degradation, which negatively impacts communities and their surrounding ecosystems.

VISION

CHAT envisions a future where individuals, communities and ecosystems across Africa are healthy and thriving.

MISSION

CHAT'S mission is to support underserved individuals and communities in fragile ecosystems across Kenya to access family planning information & services

Core Purpose

To enhance communities well-being by integrating health with environmental initiatives



MESSAGE FROM CHAT TEAM

Dear Supporters and Friends,
We present CHAT's 2023 Annual Report. Your steadfast encouragement and financial support continue to drive our mission forward.

We continued to provide integrated health services with a focus on access to family planning that efficiently impacted livelihoods and the environment.

Our approach centres on well-being, intertwining humans and nature for mutual prosperity through access to family planning, community strengthening, and inclusive advocacy.

Together with many thousands of beneficiaries, thank you for helping us to champion sustainable development and environmental well-being.

The CHAT Team

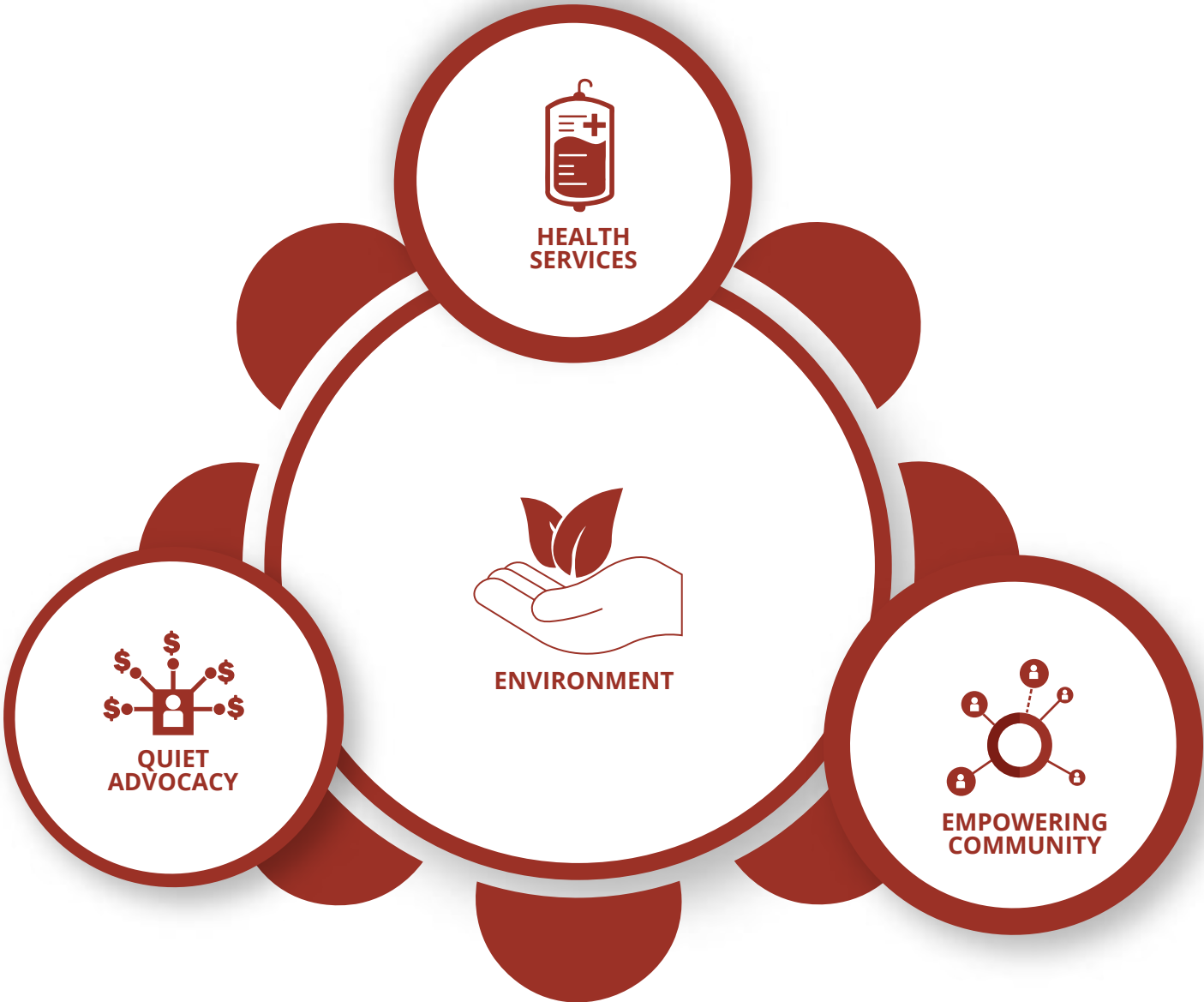




CHAT'S CORE APPROACH

CHATs People, Health and Environment (PHE) Approach.

The PHE approach acknowledges the intricate links between people, their health, and the natural resources they rely on. It offers a way to see and tackle these issues as a whole, believing that by doing so, we can achieve better results for both human well-being and the environment than if we dealt with these issues separately.



CHAT has crafted an approach that revolves around three key ways to positively impact family planning, all grounded in a holistic understanding of environmental awareness. Each of these interventions addresses specific needs and challenges. We firmly believe that by implementing them together, we can achieve lasting sustainability and make a real difference.



BY THE PEOPLE, FOR THE PEOPLE, FROM THE PEOPLE Moving towards sustainable environments.



Grassroots Partners

CHAT collaborates with communities using a partnership approach. The community, including their elders and leaders, chooses a 'Community Own Resource Person' (CORP) who is essentially a good communicator trusted by the community. There are no formal requirements or education needed for them to join. Each CORP helps their community based on its specific needs and challenges. The focus is about family planning and community issues like gender-based violence (GBV) and people living with disability (PWD), advocating for reliable health supplies at the grassroots level - and other development, environmental, and livelihood projects. CORPs are rewarded based on their performance and receive continuous support from CHAT, including ongoing mentoring and training facilitated with the Government of Kenya.





BACKPACK

CHAT collaborates with CORPs to raise awareness and mobilize by going door-to-door in their own and neighboring communities. They share information and provide counseling about family planning through the implementation of CHAT's innovative and integrated People Health & Environment (PHE) approach.

The CORPs also offer referrals to local health centers and help individuals access these services. Additionally, they engage with people on broader ecological and social issues that affect the overall well-being of the community.



MOTOR MOBILE

In certain locations, an initial arrangement involves a mobile clinic with motorized transportation to deliver a comprehensive range of health services. These services encompass family planning, HIV counselling and testing, immunizations, antenatal care, child welfare clinics, basic curative treatment, and referrals.



CAMELS

In the challenging and remote semi-arid areas, CHAT uses camel mobile health clinics. These clinics provide a range of health services, such as family planning, antenatal care, HIV testing and counselling, basic treatment, and referrals, including support for Gender-Based Violence issues. Typically, these clinics operate for one month at a time.



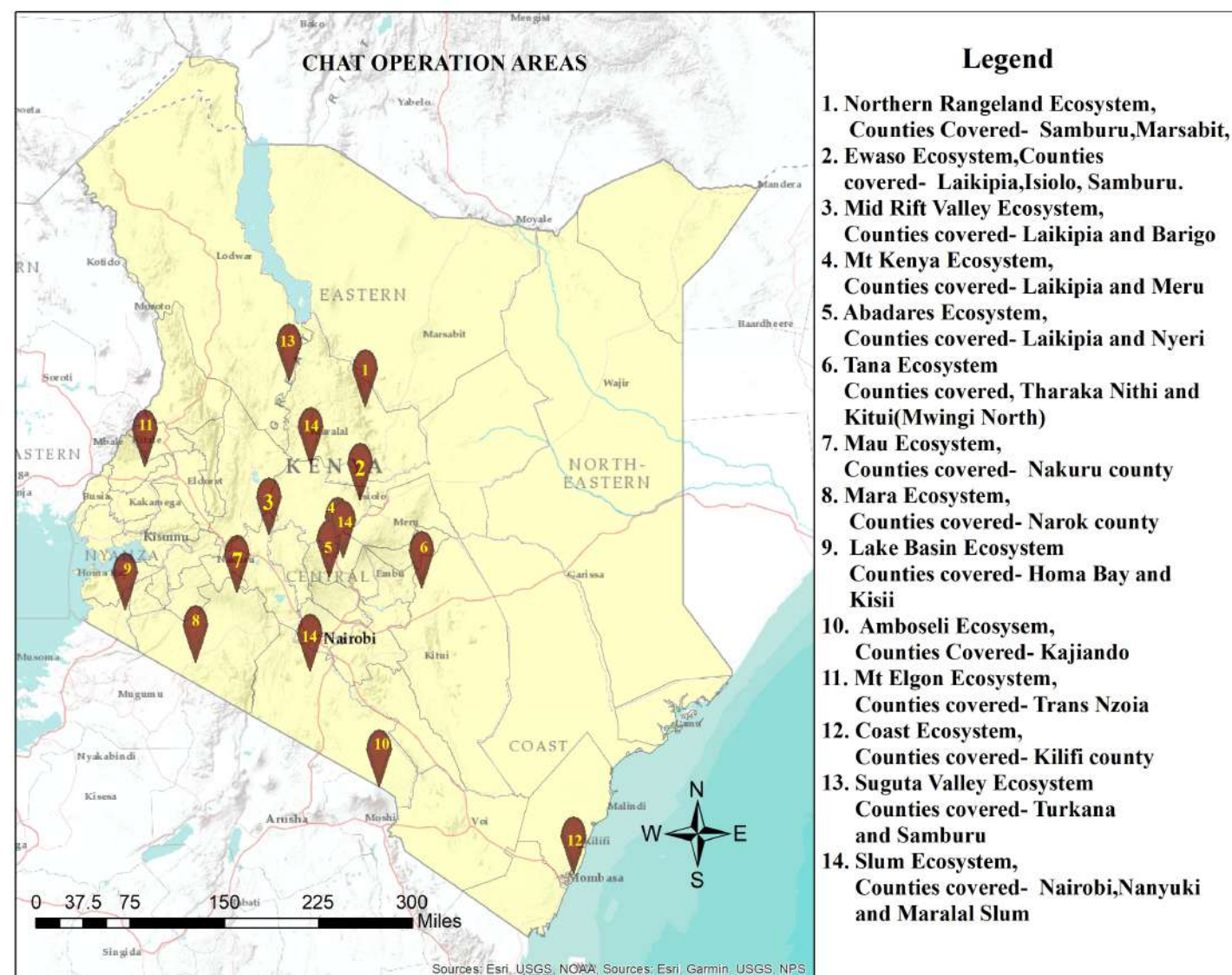
CANOE

Canoes are used to cross from one community to the other to access vital integrated family planning services.



WHERE WE WORK

CHAT concentrates on fragile ecosystems where human-nature coexistence occurs, spanning diverse areas like mountains, acacia woodlands, dry-land savannah, and riverine zones. Unsustainable population growth in these regions leads to environmental degradation, perpetuating cycles of poverty and hardship for the communities relying on degraded natural resources.



UNDERSERVED

About 80% of the people benefiting from CHAT's services reside in underserved rural regions. Challenges for these individuals in accessing and utilizing family planning services include poverty, limited education or literacy, remote locations without functional health facilities, cultural and religious obstacles, as well as myths or misconceptions.



CHAT VALUES



Committed: CHAT expresses a deep sense of dedication in all aspects of their work. CHAT's team is committed to go the extra mile to provide support and services to the communities they serve with an attitude of respect, care and compassion.



Inclusive: CHAT endeavours to include everyone – men, women and youth – in family planning decisions. CHAT also believes that partnership with government, religious organizations, and community groups are integral to quality implementation of their work.



Works with integrity: CHAT is primarily accountable to its beneficiaries, but also to its partners and donors. CHAT works hard to build and maintain trust with all stakeholders by being honest and transparent, and following through on plans and promises made.



Grassroots innovation: CHAT adapts its approach and interventions by learning and growing with the communities they serve, emphasizing culturally appropriate and locally-embedded solutions.





CHAT's 14 ECOSYSTEMS

CHAT focuses on fragile ecosystems where people and nature coexist, such as mountains, acacia woodlands, dryland savannahs, riverine areas, and urban slums, including regions near/in community conservancies.

Over the past year, CHAT reached 500+ communities addressing community and environmental health, as heavy reliance on natural resources leads to poverty cycles due to resource degradation. CHAT's efforts aim to break this cycle by promoting sustainable practices that benefit both communities and the environment.

KEY FOR ECOSYSTEMS



CAMEL MOBILE
OUTREACHES



MOTOR MOBILE
(CIRCUITS)



NUMBER OF INDIVIDUALS
REACHED WITH POSITIVE PHE
BEHAVIOUR CHANGE
INFORMATION



BACKPACK
(ON FOOT)

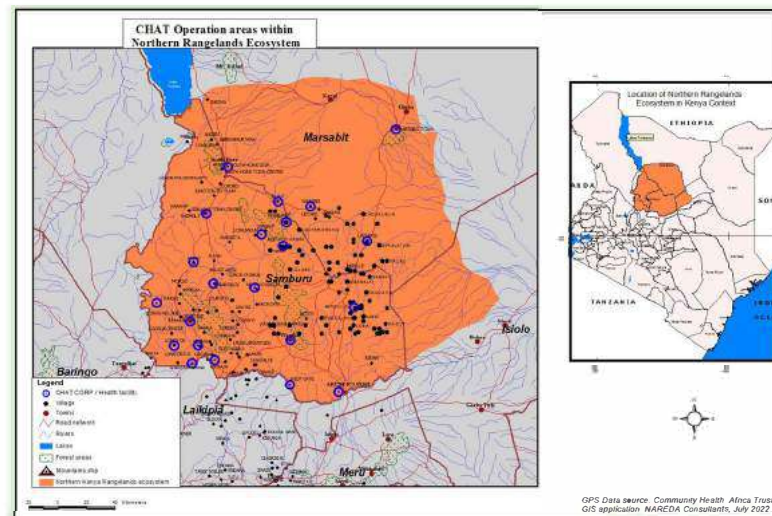


VILLAGE
COMMITTEES



NUMBER OF WOMEN
REACHED WITH DIFFERENT FP
METHODS OF THEIR CHOICE

CHAT ACTIVITIES IN VARIOUS REGIONS IN 2023



NORTH KENYA RANGELANDS DRY, SHRUBBY, REMOTE

📍 Samburu & Marsabit, some of Isiolo County

ECOSYSTEM



27



0



12 days monthly



46,511

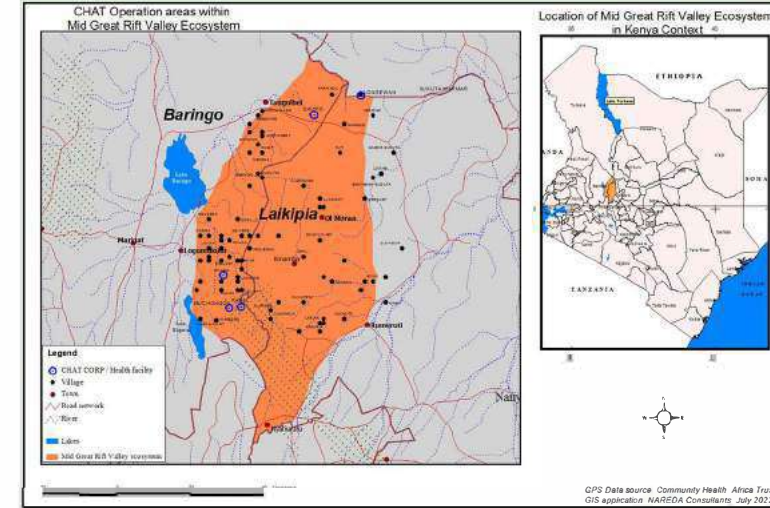


7



29,302

*10 days in Northern Kenya Rangelands and in Ewaso for 20 days



MID EAST RIFT VALLEY MIXED - GREEN HIGHLANDS WITH DRY SCRUB LOW SCLANDS

📍 Muchongoi in Baringo County

ECOSYSTEM



1



0



0



1,723



0



1,118

LAKE VICTORIA BASIN FISHING, SMALL SCALE FARMING

📍 Nyaribari Masaba & Karachunyo Sub-Counties

ECOSYSTEM



2



0



0



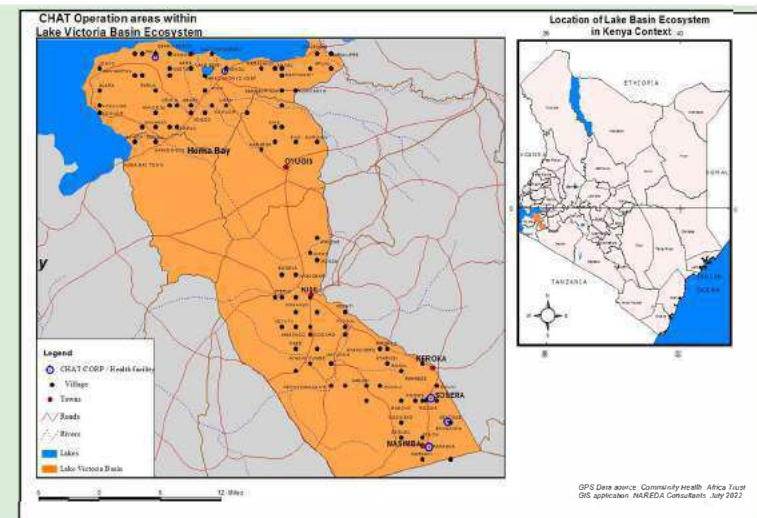
3,429



0



2,495



EWASO NYIRO DRY, SHRUBBY, REMOTE

📍 Isiolo, Laikipia & Samburu Counties

ECOSYSTEM



7



0



12 days monthly



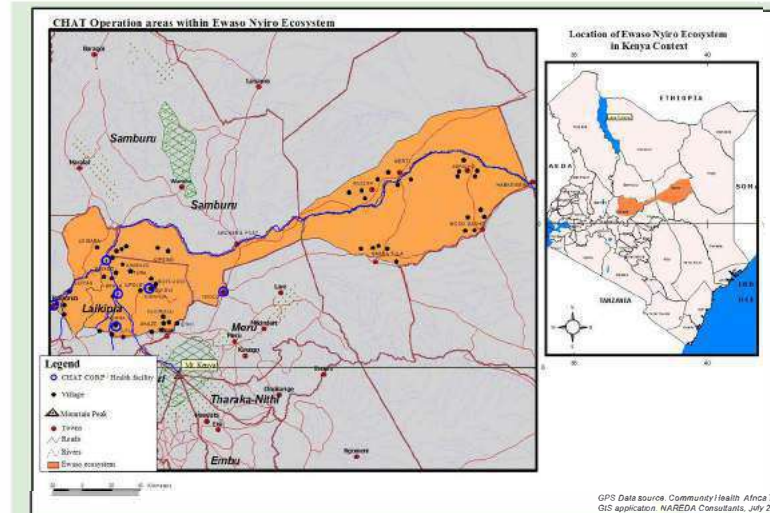
39,078



3



21,329



MT. KENYA RIVERS, MOUNTAINS & DRY SHRUB LAND

📍 Meru, Nyeri & Nanyuki

ECOSYSTEM



2 daily



0



0



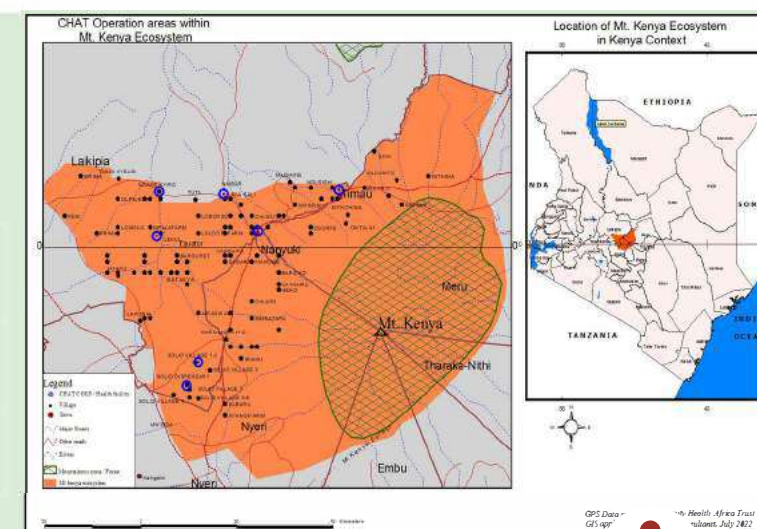
3,579



0



2,518



TANA RIVER CRITICAL WATER BASIN RUNNING THROUGH HUMID BAOBAB & SCRUBLAND

📍 Mwingi North & Tharaka South Sub-Counties

ECOSYSTEM



7



0



10 days x 4
quarterly



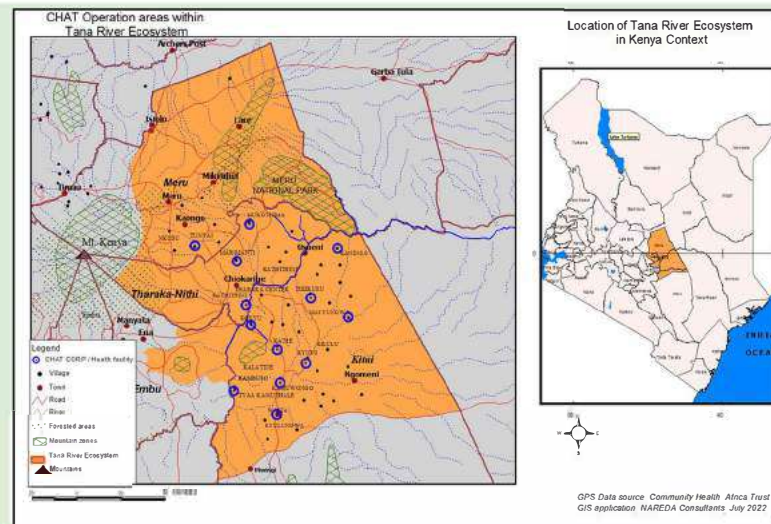
14,842



0

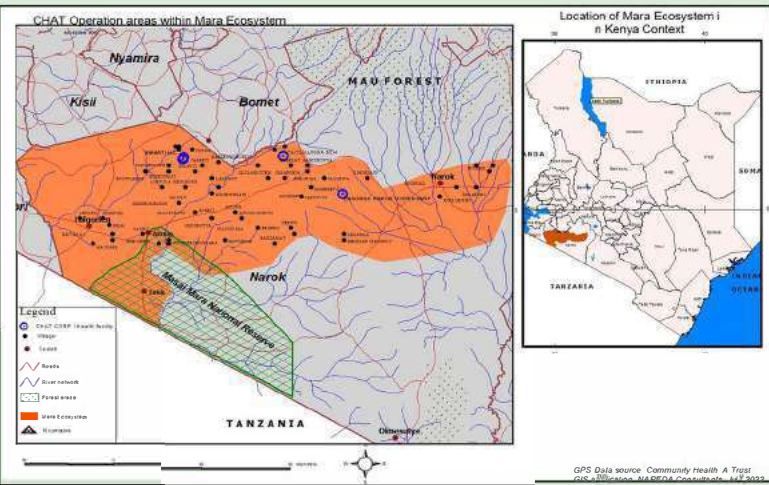


9,858





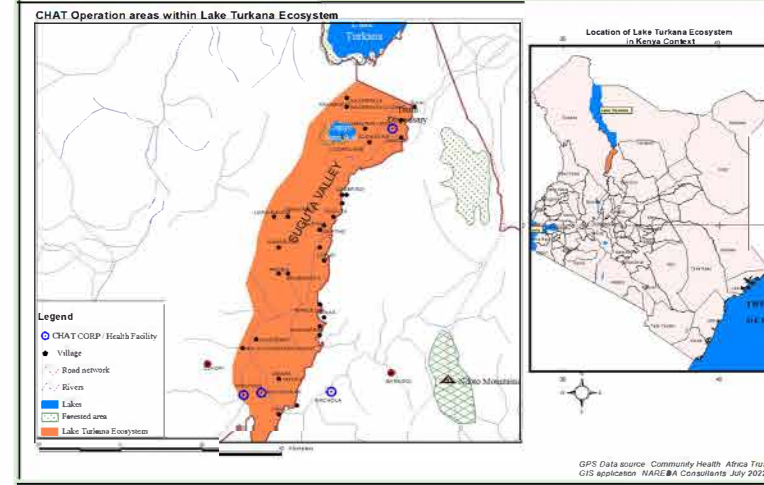
CHAT'S ECOSYSTEM



THE MARA WILDLIFE, WHEAT, PLAINS Narok County

ECOSYSTEM

	2 daily		4,239
	0		0
	0		2,431



SUGUTA VALLEY EXTREMELY HOT ENVIRONMENT Suguta Valley

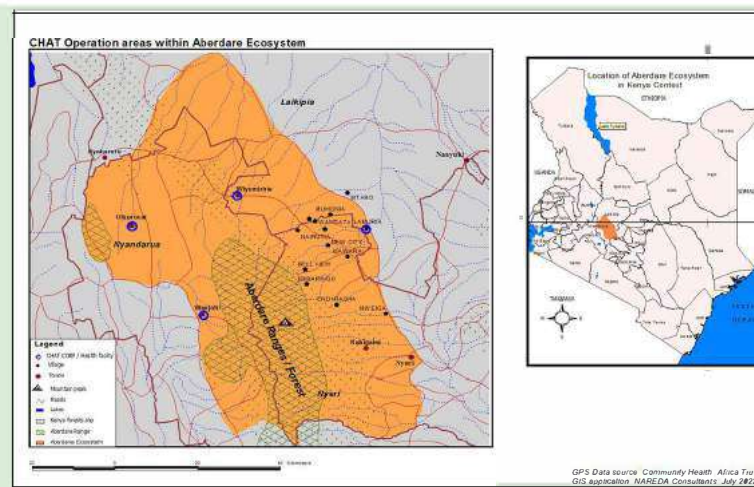
ECOSYSTEM

	1 daily		1,228
	0		0
	0		839

ABERDARES MOUNTAIN RANGE MOUNTAINS, FORESTRY, RIVERS & SMALL SCALE FARMING Nyandarua County

ECOSYSTEM

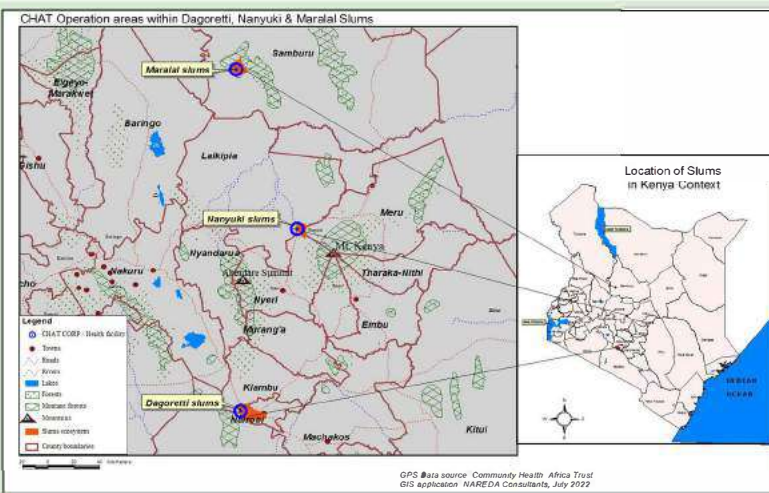
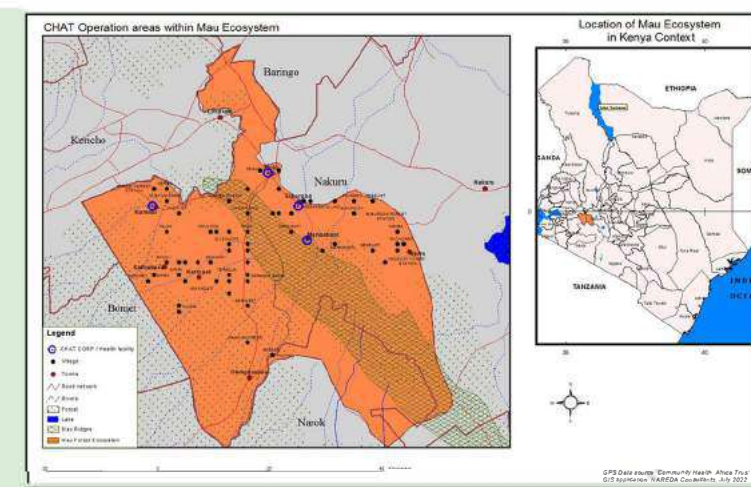
	1 daily		2,398
	0		0
	0		928



THE MAU FORESTRY, RIVERS AND SMALL SCALE FARMING Elburgon, Molo & Kuresoi in Nakuru County

ECOSYSTEM

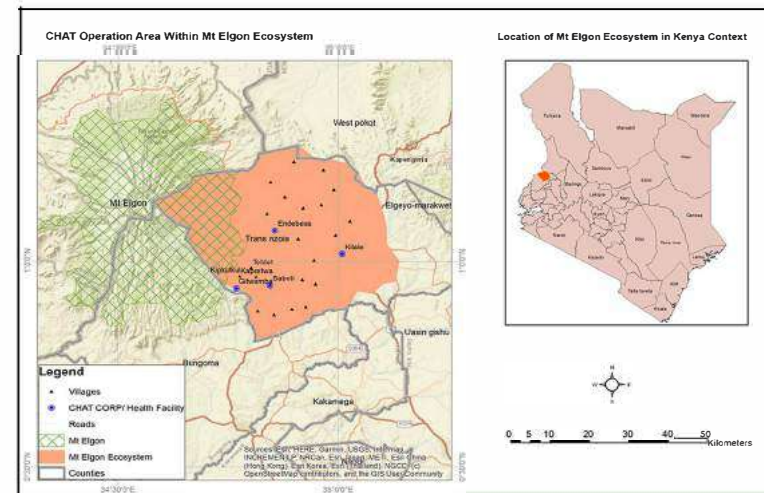
	2 daily		4,124
	0		0
	0		2,678



SLUMS HARDSHIP, CROWDED & STRUGGLE Nairobi, Laikipia, Isiolo & Maralal Counties

ECOSYSTEM

	5 daily		8,011
	0		0
	0		6,260



MT. ELGON Mountain Forestry Rivers & SmallScale Farming Elburgon, Molo & Kuresoi in Nakuru County

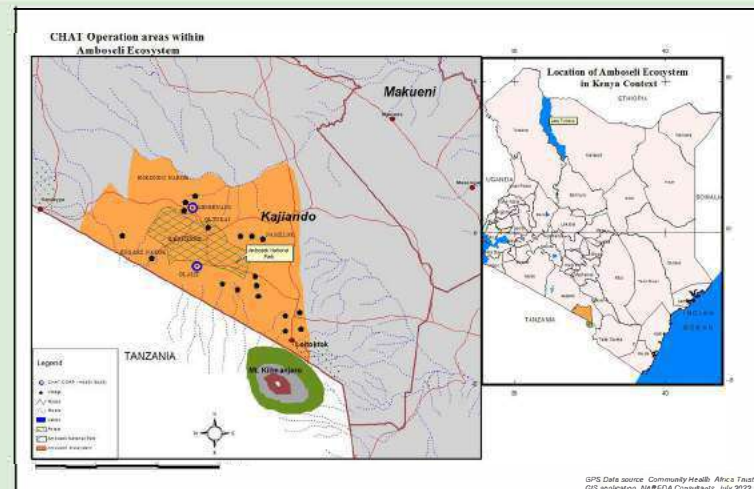
ECOSYSTEM

	2 daily		4,103
	0		0
	10 x 1 days		2,986

MT. KILIMANJARO (AMBOSELI) Dry, Shrub, Remote, Mountain Kajiado

ECOSYSTEM

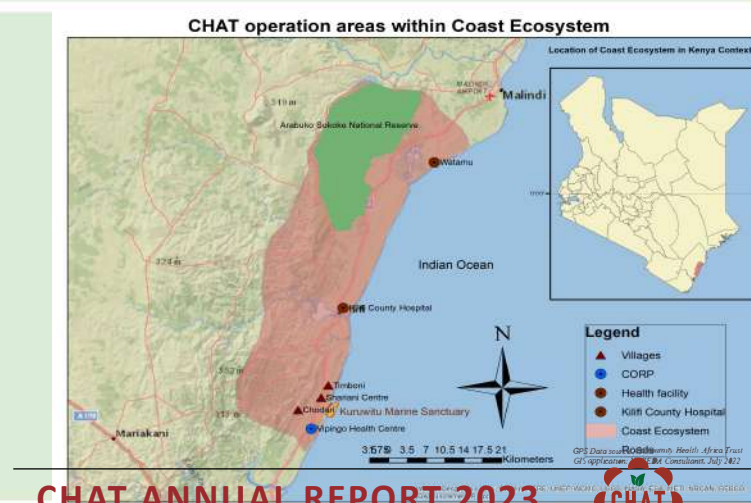
	2		3,971
	0		0
	0		2,104



THE COAST Marine, Fisheries & Coral Kuruwitu, Shariani, Vipingo in Kilifi County

ECOSYSTEM

	1		3,029
	0		0
	0		1,654

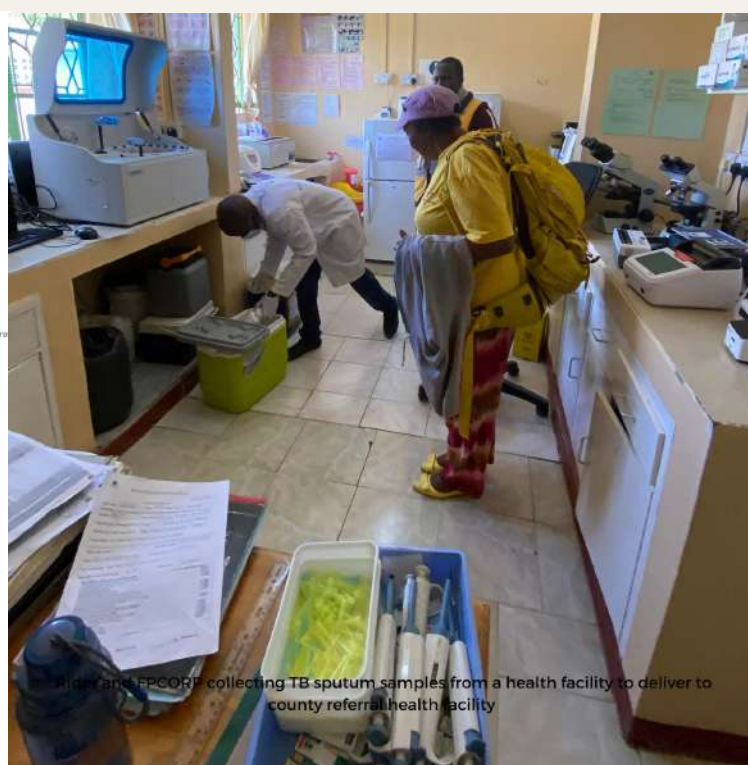
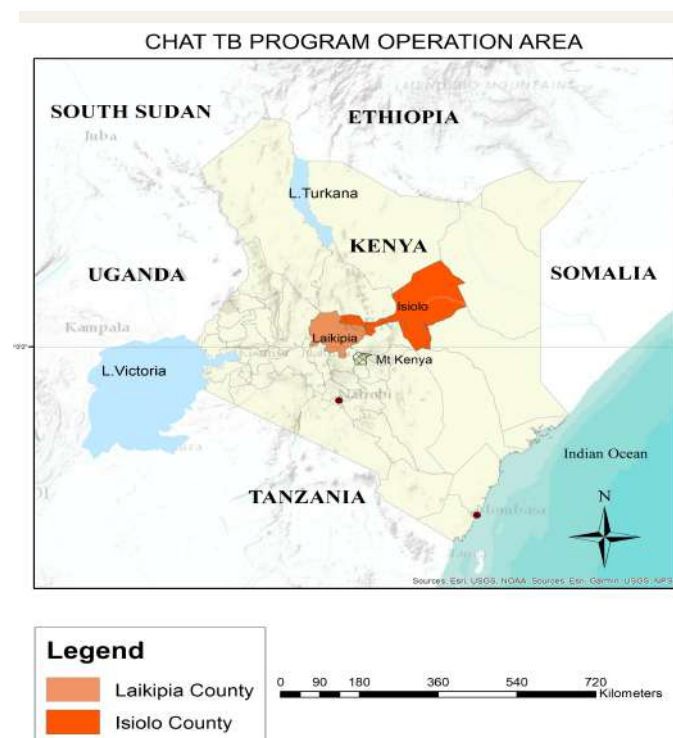




TB ACTIVITIES

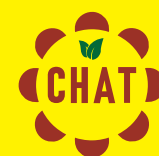
CHAT, in collaboration with the Ministry of Health (MOH) and AMREF Health Africa, is funded by Global Fund to implement several interventions aimed at combating tuberculosis (TB). These interventions include identifying and referring new contact smears, locating TB patients who have interrupted treatment, conducting community TB screening outreaches, offering health and nutritional education to TB patients through household visits, establishing TB lab networking for sample referrals within government facilities, and expanding referral networks and treatment sites between private and government healthcare facilities.

In the FP/TB initiative, CHAT collaborates with 61 Boda Boda riders in Isiolo and Laikipia counties, transporting specimens from local health facilities to County Referral Hospital laboratories - and facilitating family planning commodity distribution.



CHAT's TB Achievements 2023

893 households of TB patients visited for contact screening and referrals for presumptive cases
143 TB treatment interrupters physically traced
16,362 Samples were referred for various tests through the sample referral network



IMPACT ASSESSMENT

CHAT's impact goal: Improving quality of life.

CHAT's impact assessment evaluated the effectiveness of their family planning (FP) initiatives that integrate CHAT's innovative People Health and Environment (PHE) approach.

The assessment gauged CHAT's work on Relevance, Coherence, Efficiency, and Effectiveness, offering sustainable recommendations of CHAT's growth since 2007. CHAT continues its impactful journey, maximising successful strategies and ensuring a sustainable future.

This assessment was done by an external consultant.
Contact us for a detailed report.



2023 TIMELINE

Q1

In January, CHAT updated its organisational policies and outlined plans for the year ahead, ensuring alignment with its objectives. Attended a pivotal TB intervention meeting facilitated by AMREF, a Kenyan International NGO

Q1

February marked a significant expansion for CHAT as it ventured into Kilifi County, extending its reach and impact. Moreover, the organisation provided mentorship to a newly identified CORP, reinforcing its dedication to capacity building. A visitor from the UK made a flying visit to CHAT's mobile clinic in the Ewaso Nyiru Ecosystem, where integrated FP and basic curative treatment were provided.

March Global Fund conducted an on-site data verification visit in Laikipia, where CHAT implements part of its TB project—attended a lunch meeting with a donor team from the USA at Loisaba tented camp.

Q2

April saw CHAT organising a CORPs supervision in Nanyuki, bringing together all 64 grassroots partners to review progress. The event served as a platform for fostering collaboration and sharing best practices. CHAT was featured in a special bulletin aired on Kenya's national television.

Q2

May CHAT participated in the third annual CHASE Africa Partner Conference in Limuru. The conference, which focused on family planning services and related topics, provided CHAT with valuable insights and networking opportunities.

June- Hosted visitors from Holland interested in CHAT's projects and visited the FP project at Nanyuki slum and Kendu Bay. We held the annual general meeting with trustees in Nairobi.

Q3

July commenced with CHAT's active involvement in a Quarterly Review meeting for the TB project, facilitated by AMREF in Mombasa.

A notable highlight in August was CHAT's presentation of its work to the EAWL Nanyuki Branch, which showcased its initiatives and garnered support through a generous donation.

September was marked by diverse activities, including participation in the African Conservation Leaders workshop in Naivasha and commemorating World Contraception Day across various countries. Additionally, CHAT rescued a baby impala antelope and initiated vital impact assessment endeavours facilitated by Maliasili and funded by TNC.

Q3

Q4

In October, CHAT completed impact assessment field activities and attended an ODSS workshop in Machakos facilitated by AMREF.

Q4

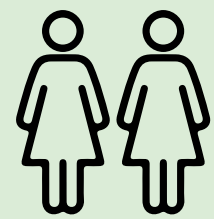
In November, a potential donor from Norway expressed commitment to funding activities in the Mara region. CHAT continued its partnership with TNC, as the TNC team visited the motor mobile clinic. CHAT participated in a Monitoring, Evaluation, and Learning workshop.

December concluded the year with strategic engagements, including a lunch meeting with TNC's management team and staff undergoing Power BI training to enhance data visualisation capabilities. Additionally, CHAT conducted CORPs supervision meetings in Nanyuki before its staff took annual leave.



HOW TO SUPPORT CHAT

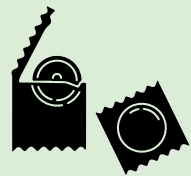
If you would like to support CHAT Please visit:	www.chatafrica.org/donate
To see our volunteering opportunities please visit:	www.chatafrica.org/volunteer
For any other enquiries please contact:	mobileclinicsafrica@gmail.com
Check out our projects on:	www.globalgiving.org
MPESA Paybill	831300 A/C GG18563



US \$12
WILL PROVIDE 2 WOMEN
WITH **SHORT-TERM**
CONTRACEPTION
METHOD FOR
1 YEAR



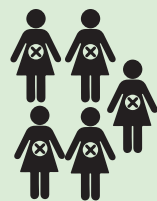
US \$18
WILL PROTECT 1 WOMAN
AGAINST UNWANTED
PREGNANCY FOR
5 YEARS



US \$30
WILL SUPPLY 1 MAN
WITH CONDOMS FOR
1 YEAR



US \$180
WILL SUPPORT OUR PARTNERSHIP
WITH A COMMUNITY OWN
RESOURCE PERSON (CORP) FOR
1 MONTH



US \$90
WILL PROTECT 5 WOMEN
AGAINST UNWANTED
PREGNANCY FOR
5 YEARS



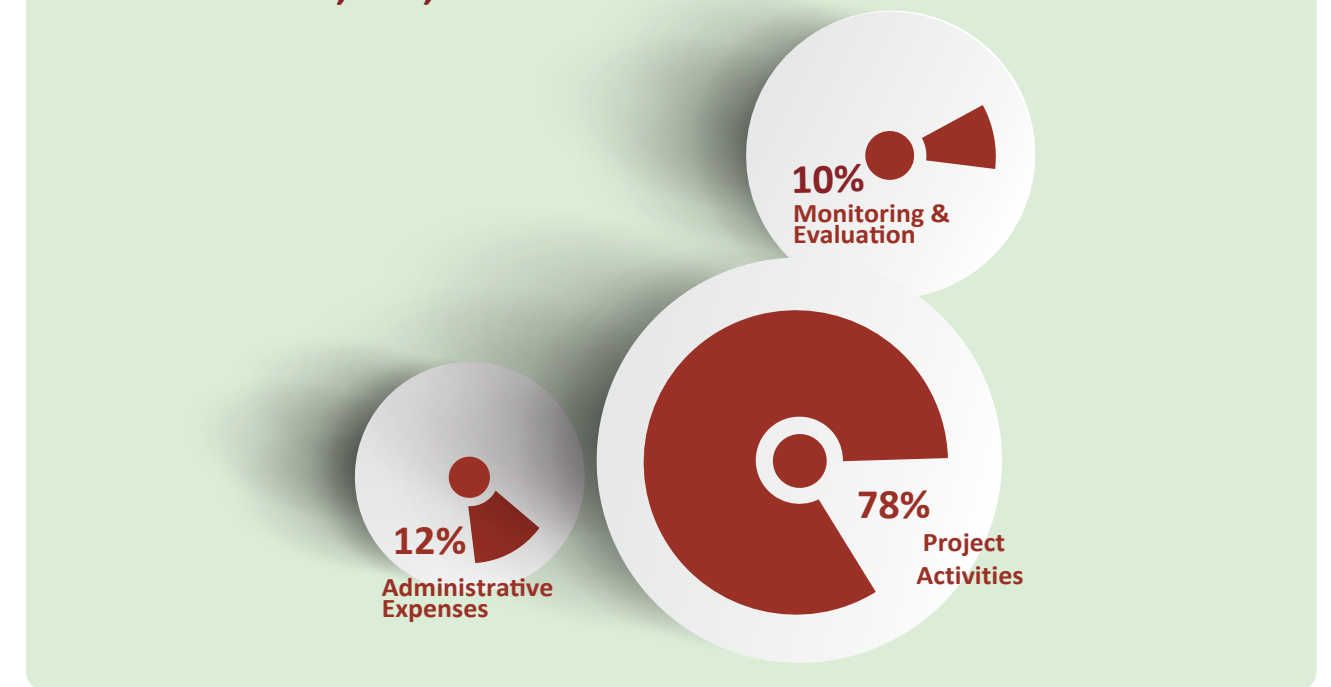
US \$180
WILL PROTECT 10 WOMEN
AGAINST UNWANTED
PREGNANCY FOR
5 YEARS



FINANCES

► **INCOME: KSH 109,096,121**

► **EXPENSES: 106,299,950**






► **A DETAILED BREAKDOWN OF COSTS TAKEN FROM THE CHAT FINANCIAL STATEMENT 2023:**

PROJECT ACTIVITIES	82, 669, 727
MONITORING & EVALUATION	10,629,040
ADMINISTRATIVE EXPENSES	13,001,183

It cost CHAT **\$6.59** per individual reached.

All annual audits are available on the CHAT website at www.chatafrica.org or can be requested from mobileclinicsafrica@gmail.com



OUTREACH STRATEGY	COUNTIES	TRIPS (2023)	INDIVIDUALS ON CONTRACEPTION	BEHAVIOR CHANGE COMMUNICATION	OTHER SERVICES	
 CAMEL MOBILE OUTREACHES	None	0	0	0	Basic curative treatment	0
					ANC	0
					HIV Testing & Counselling	0
 MOTOR MOBILE (CIRCUITS)	Isiolo, Samburu, Laikipia, Kitui Tharaka Nithi	15 X 10	27,872	42,034	Basic curative treatment	5,229
					ANC	432
					HIV Testing & Counselling	2,991
					Immunization	429
 BACKPACK (ON FOOT)	19	62	58,628	98,231	ANC	724
					HIV Testing & Counselling	3,907
					Immunization (Referrals)	845

140,265

Total number of individuals reached



130

Average number of individuals reached by one CORP per month



10

Village Development Committees (VDCs) strengthened



94.6%

of individuals who receive CHAT's services living in rural areas



DONORS & PARTNERS- Thank You

Over its history, CHAT has prioritised cultivating enduring relationships with diverse local, national, and global donors - and partners.

We extend our gratitude to the many private individual donors whose contributions are invaluable to our mission. While they may not be listed here, we deeply appreciate their support. Below is a list of our donors in 2023.

►DONORS

- “Anonymous” - Kenyan Trust
- Community Health a Poverty Solution (CHAPS) - US*
- Community Health and Sustainable Environment (CHASE) - UK*
- Danny from the UK
- East Africa Women League - Kenya
- Evolve
- Gitta from Germany
- Global Fund
- Kenya Wildlife Trust
- Kijani Trust – Kenya
- Let The Sun Rise
- Morony Foundation - US
- Nanyuki Horse Show
- Penelope Martin Charitable Trust
- The Nature Conservancy - US
- Tropic Air Kenya
- Other kind donations via PayPal, MPESA, Global Giving & Giving Way

* CHAT is a founding partner

►WORKING PARTNERS

- 19 County Governments
- 33 grassroots health support groups & VDCs
- 64 CORP Partners
- Amref Health in Africa
- BodaBoda Saccos in Isiolo and Laikipia (61 riders)
- Crossroads Baptist Church
- Government of Kenya
- Kitirwa Conservancy
- Loisaba Conservancy - Kenya
- Mission for Essential Drugs & Supplies (MEDS)
- Nanyuki News
- Narupa Conservancy - Kenya
- Nkoteiya Conservancy – Kenya
- Naibunga Conservancy - Kenya
- Ol Jogi Conservancy – Kenya
- Suiyan - Kenya
- Water Resource Users Association (WRUAs)
- Kalepo Conservancy
- Nanapa Conservancy

* Listed on the website



**COMMUNITIES
HEALTH AFRICA
TRUST**

OFFICE

Lentile House, Nanyuki, Kenya

CONTACTS

✉ **mobileclinicsafrica@gmail.com**

f **@communitieshealthafrica**

📷 **@communitieshealthafricatrust**

🌐 **www.chatafrica.org**

OUR GLOBAL GIVING PROJECTS:

Globalgiving: <https://www.globalgiving.org/donate/6423/communities-health-africa-trust/>

